



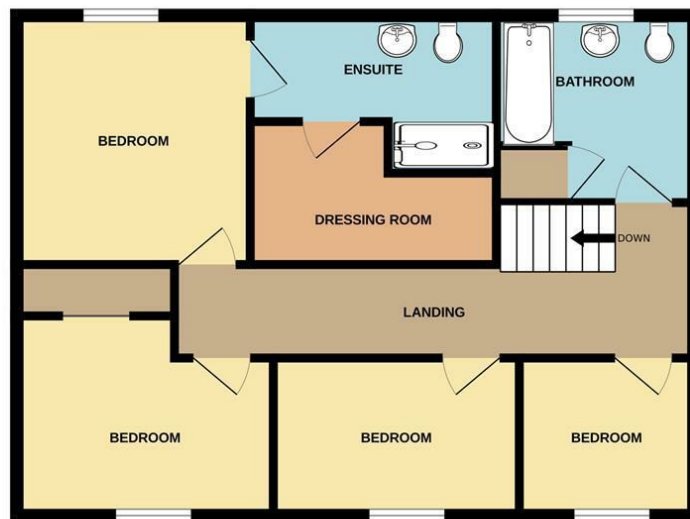
Hastings Close | Norwich | NR15
 Guide £350,000

abbotFox

GROUND FLOOR
 72.0 sq.m. (775 sq.ft.) approx.



1ST FLOOR
 60.6 sq.m. (652 sq.ft.) approx.



TOTAL FLOOR AREA : 132.6 sq.m. (1427 sq.ft.) approx.

Whilst every attempt has been made to ensure the accuracy of the floorplan contained here, measurements of doors, windows, rooms and any other items are approximate and no responsibility is taken for any error, omission or mis-statement. This plan is for illustrative purposes only and should be used as such by any prospective purchaser. The services, systems and appliances shown have not been tested and no guarantee as to their operability or efficiency can be given.
 Made with Metropix ©2024

Energy Efficiency Rating		Current	Potential
Very energy efficient - lower running costs			
(92 plus) A			81
(81-91) B			
(69-80) C			
(55-68) D		63	
(39-54) E			
(21-38) F			
(1-20) G			
Not energy efficient - higher running costs			
England & Wales		EU Directive 2002/91/EC	

Disclaimer – In accordance with the Property Misdescriptions Act, the company gives notice that all descriptions, references to condition, necessary permissions for use and other details are given in good faith and believed to be correct, but any intending lessees do not rely on them as statements of fact, but must satisfy themselves by inspection or other means, as to their accuracy.



abbotFox presents this recently extended and improved four bedroom detached family home in the popular village of Tasburgh. The property features a large sitting room with wood burning stove, stunning refitted kitchen with a large pantry, a formal dining room, play room / home office and a ground floor shower room. Upstairs there are four generous bedrooms, the master with a large en suite and a dressing room, there is also an additional family bathroom off the landing, which has recently been refitted to a high standard. To the front there is off road parking for three vehicles and a good-sized landscaped rear garden.

Tasburgh is popular south Norfolk village situated just 8 miles south of Norwich (6 miles from the Norwich southern bypass) and 2 miles from Long Stratton. The village has its own pub, The Countryman, a village primary school, village hall and local church, with a more extensive range of local facilities including shops in nearby Long Stratton.

